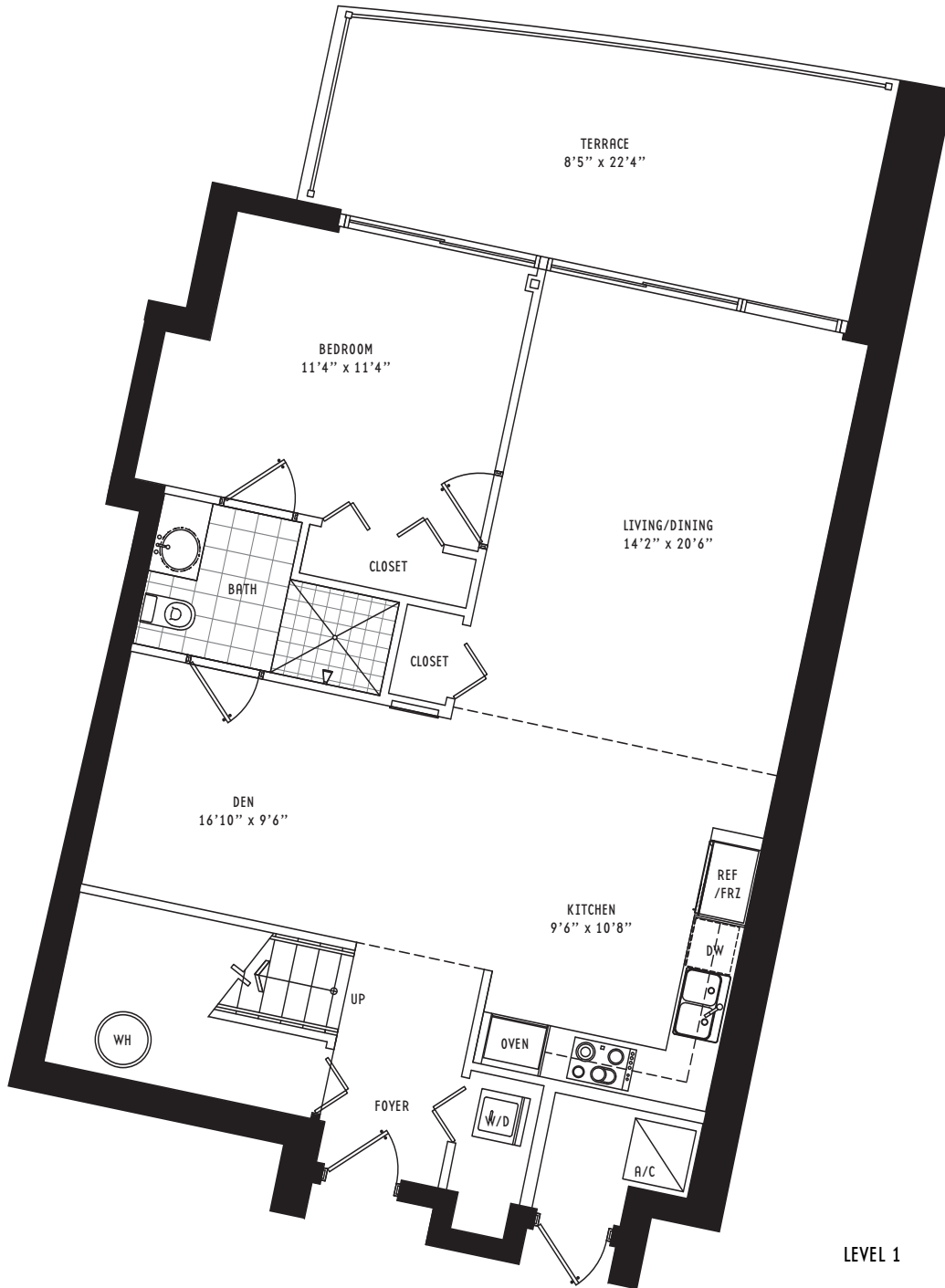


# TOWNHOME B3 2 Bedroom + Den • 3 Bath

All dimensions are approximate and all floor plans and development plans are subject to change by the developer without notice. Stated dimensions are measured to the exterior boundaries of the exterior walls and the centerline of interior demising walls and in fact vary from the dimensions that would be determined by using the description and definition of the "Unit" set forth in the Declaration (which generally only includes the interior airspace between the perimeter walls and excludes interior structural components).

Interior	1,768 sq ft	164.4 m <sup>2</sup>
Terrace	296 sq ft	27.5 m <sup>2</sup>
<b>Total area</b>	<b>2,064 sq ft</b>	<b>191.9 m<sup>2</sup></b>

305.530.0200 900BiscayneBay.com BISCAYNE 900 BAY



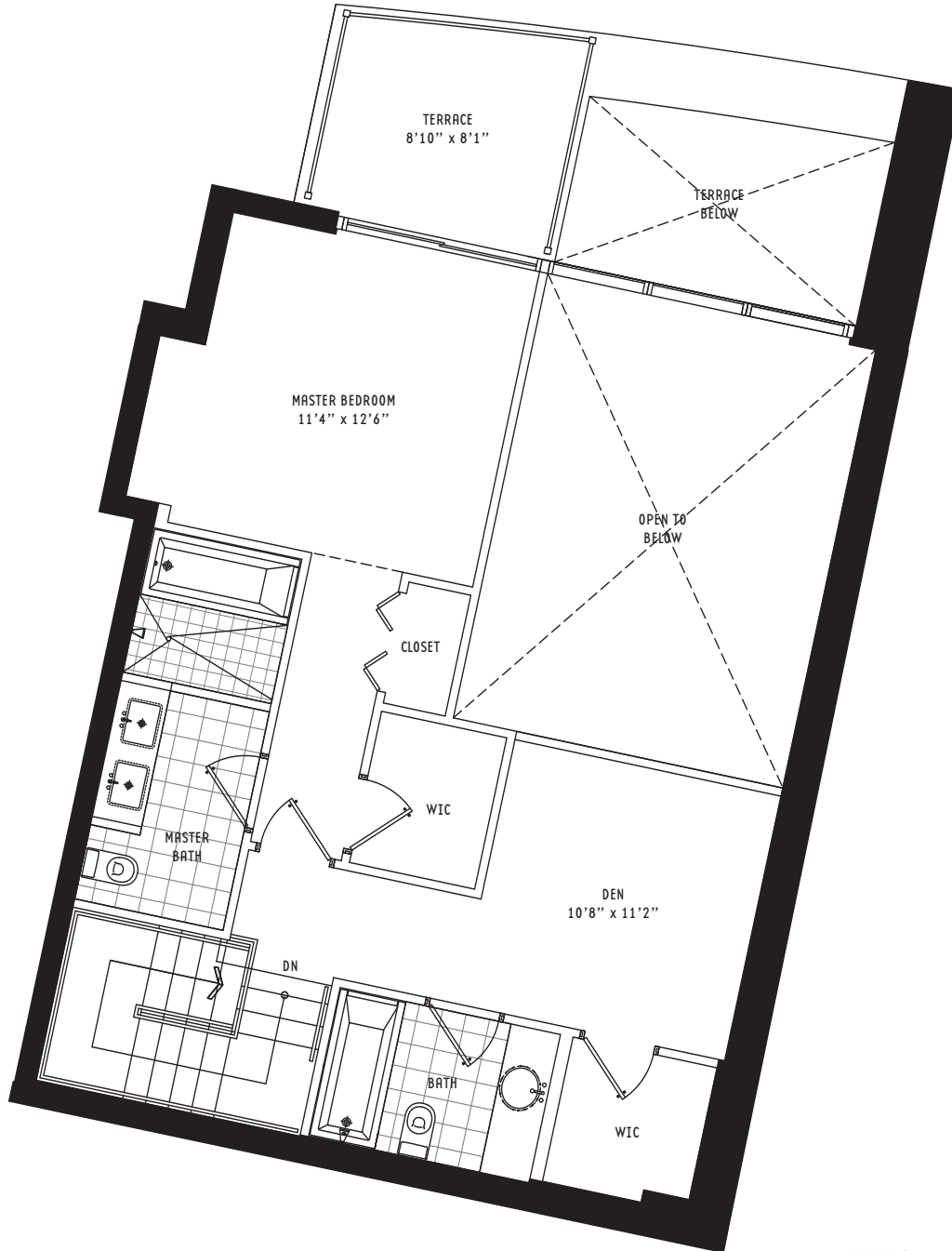
LEVEL 1

# TOWNHOME B3 2 Bedroom + Den • 3 Bath

All dimensions are approximate and all floor plans and development plans are subject to change by the developer without notice. Stated dimensions are measured to the exterior boundaries of the exterior walls and the centerline of interior demising walls and in fact vary from the dimensions that would be determined by using the description and definition of the "Unit" set forth in the Declaration (which generally only includes the interior airspace between the perimeter walls and excludes interior structural components).

Interior	1,768 sq ft	164.4 m <sup>2</sup>
Terrace	296 sq ft	27.5 m <sup>2</sup>
<b>Total area</b>	<b>2,064 sq ft</b>	<b>191.9 m<sup>2</sup></b>

305.530.0200 900BiscayneBay.com BISCAYNE 900 BAY



LEVEL 2